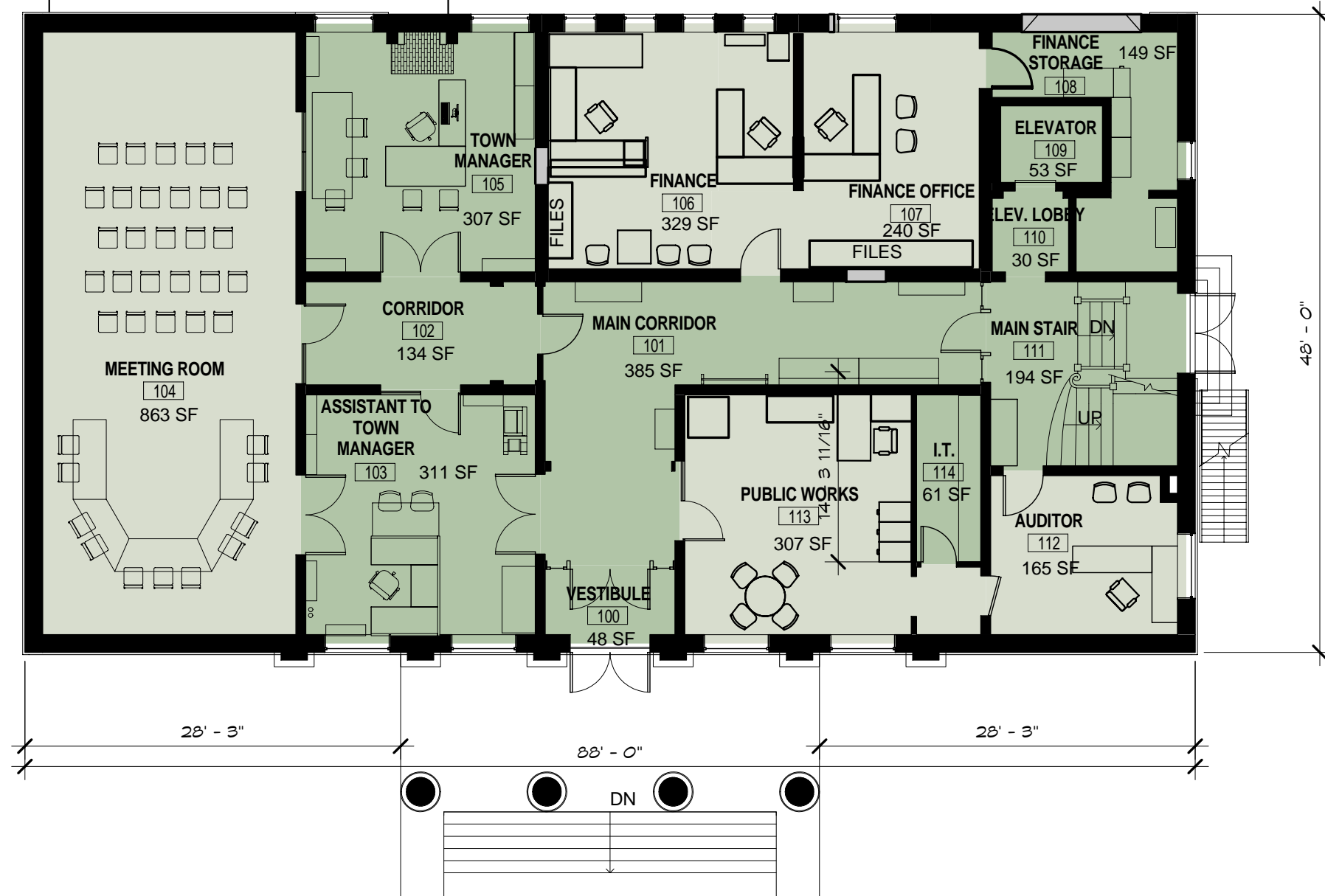


LEGEND - Areas of Work

- New construction
- Renovation or relocation
- Existing to remain



AKELEY SOLDIERS MEMORIAL BUILDING
STOWE, VERMONT

OCTOBER 1, 2009
A0917

PROPOSED FIRST LEVEL
OPTION A - EXTERNAL VAULT

3/32 = 1'-0"

© 2008 Freeman French Freeman, Inc.

